



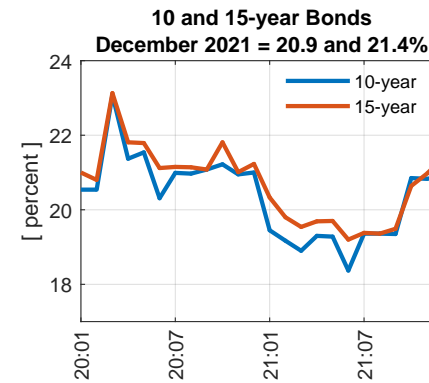
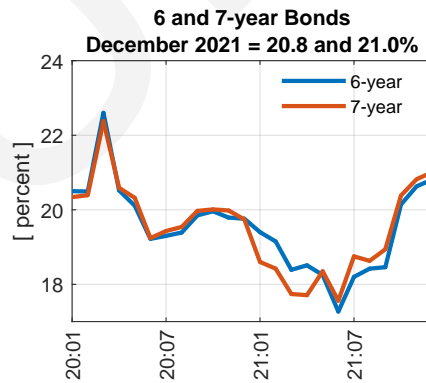
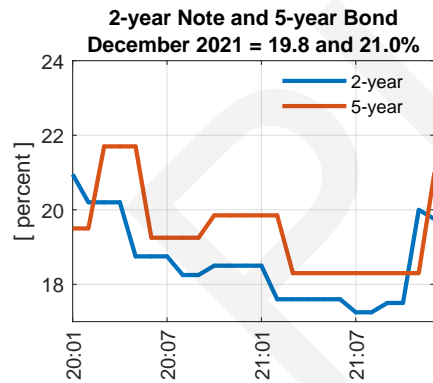
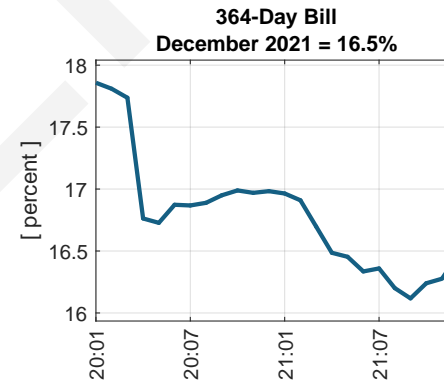
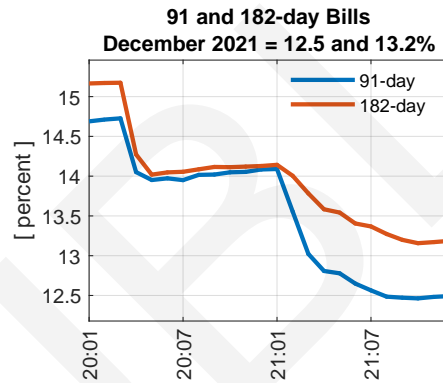
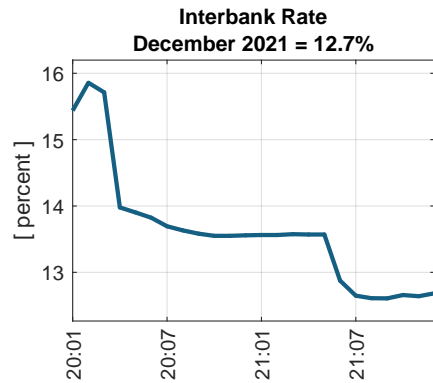
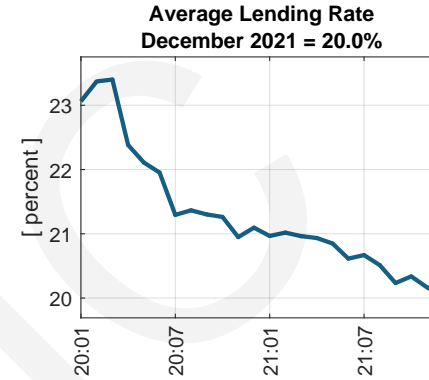
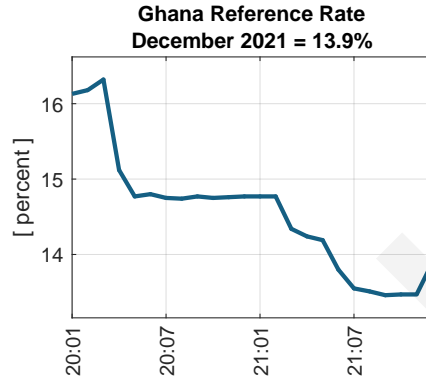
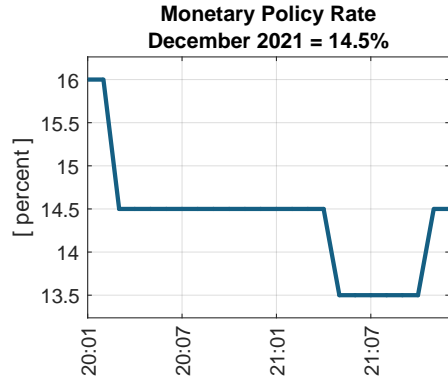
BANK OF GHANA

Summary of Economic and Financial Charts

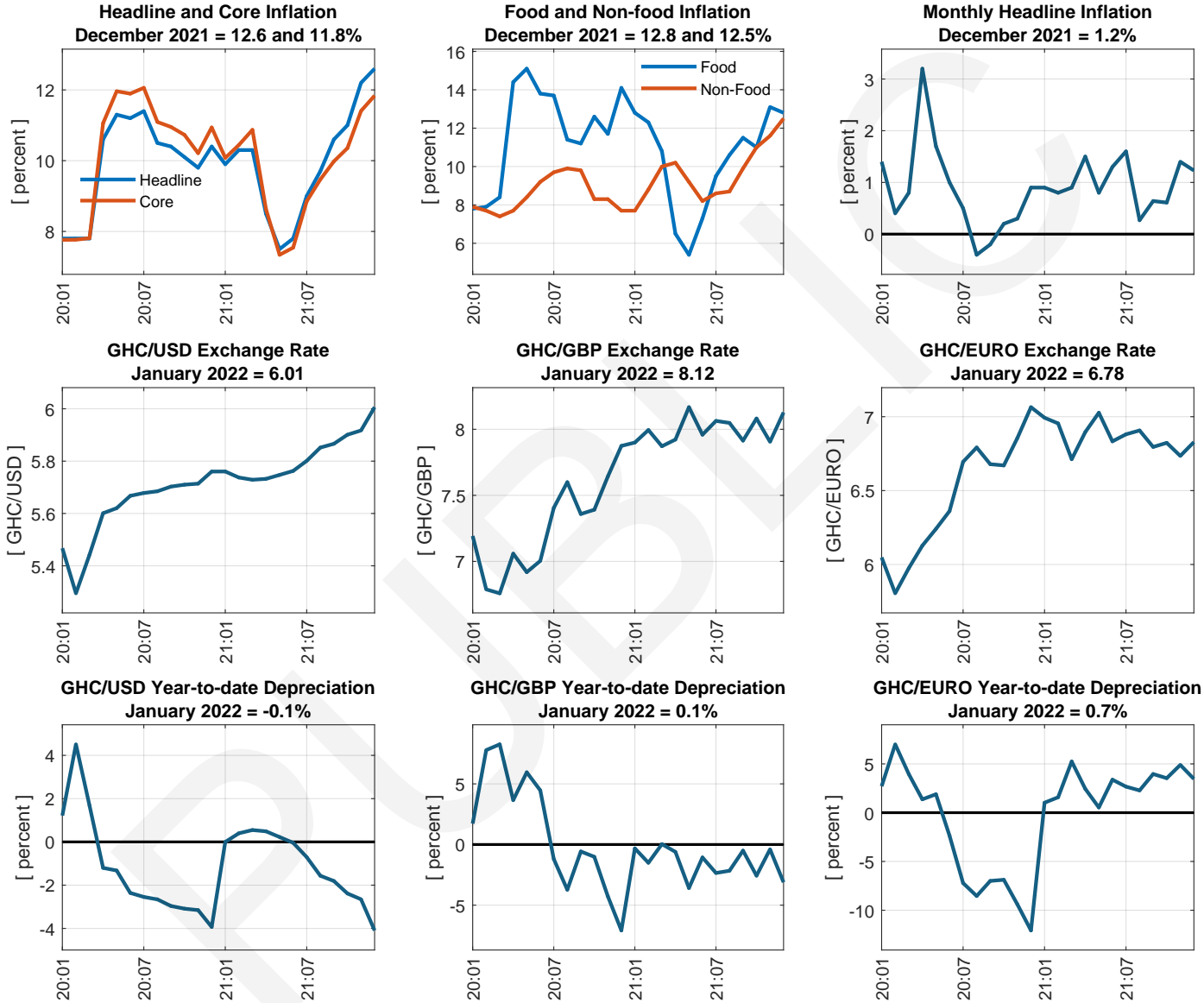
January 2022

www.bog.gov.gh

Interest Rates

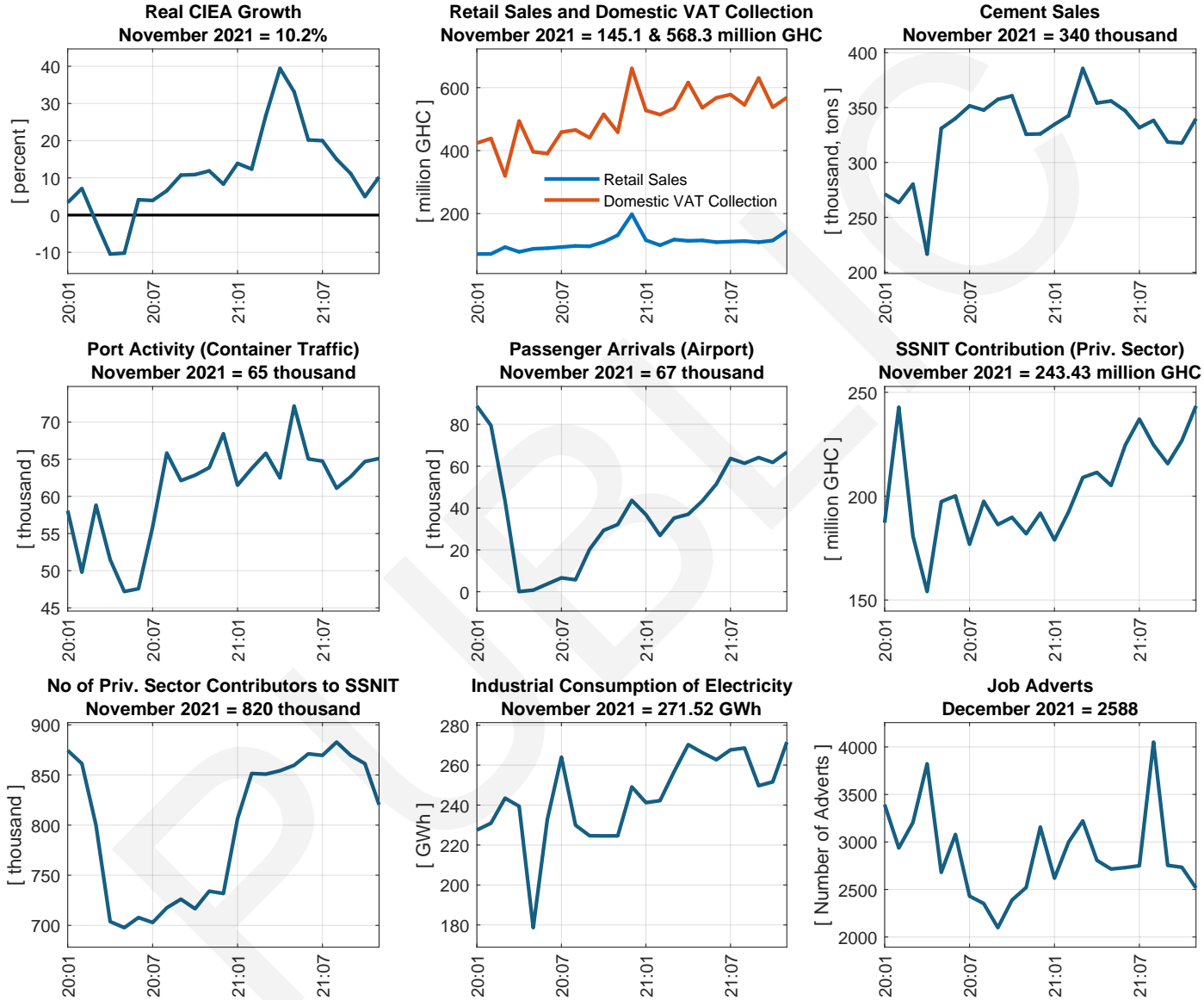


Inflation and Exchange rate²

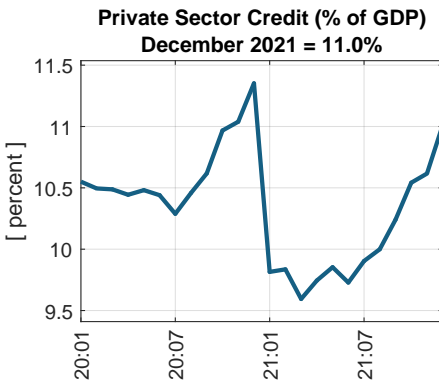
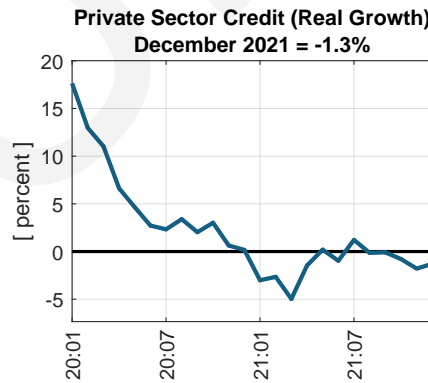
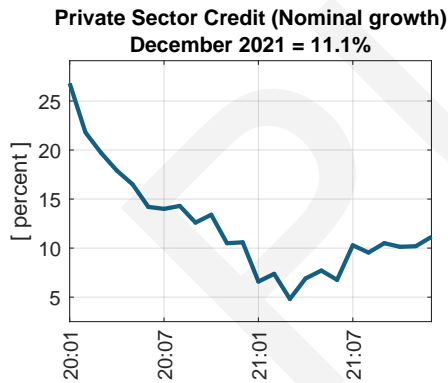
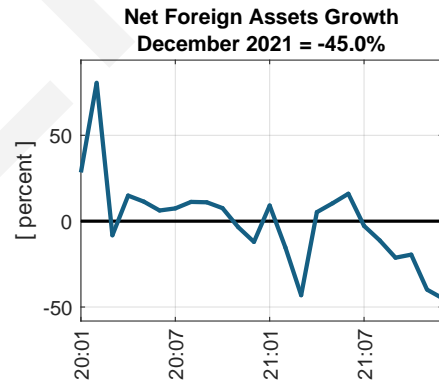
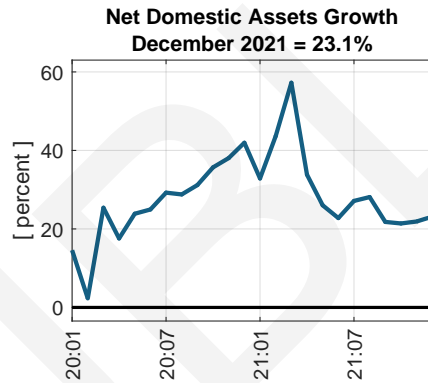
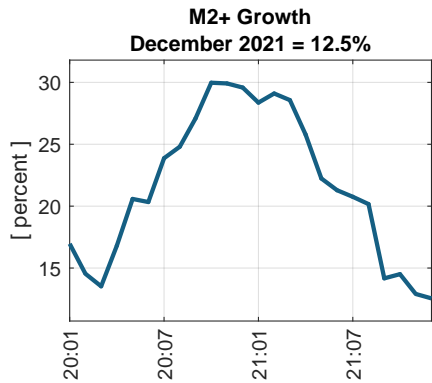
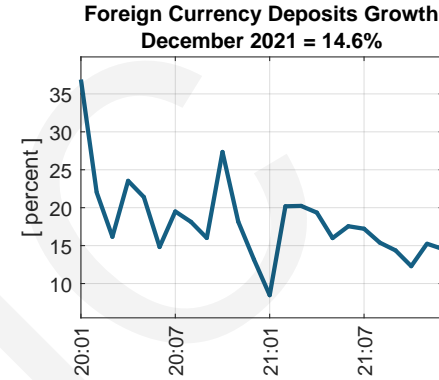
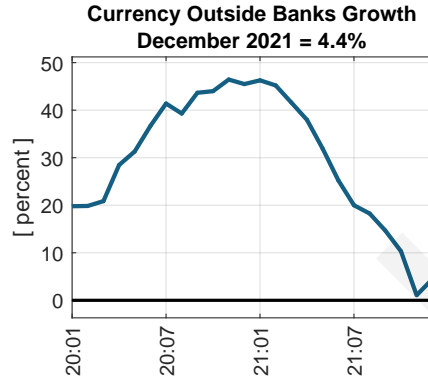
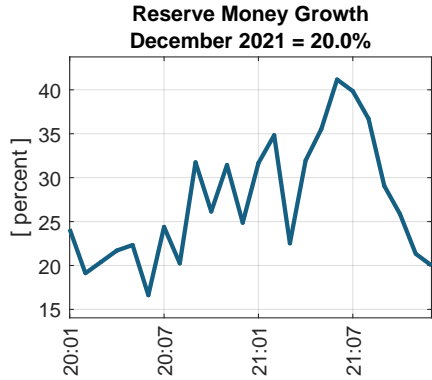


²Year-to-Date (appreciation (+) depreciation (-))

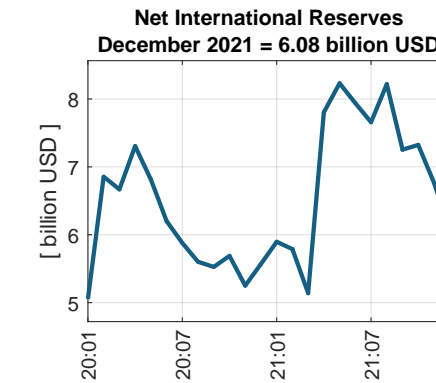
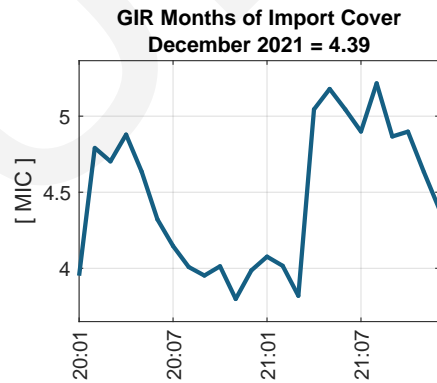
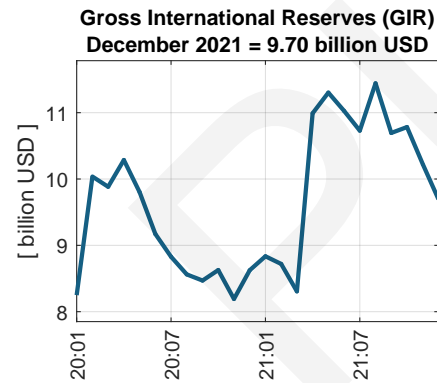
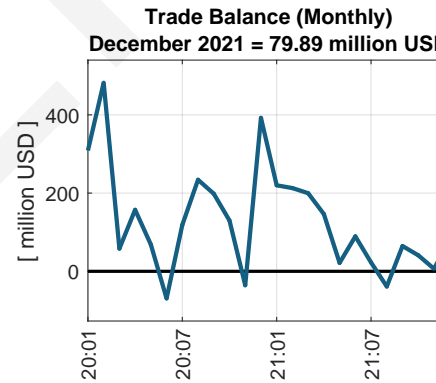
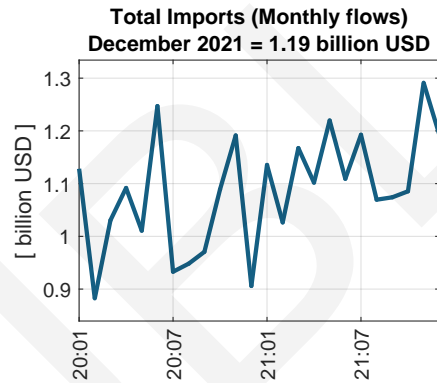
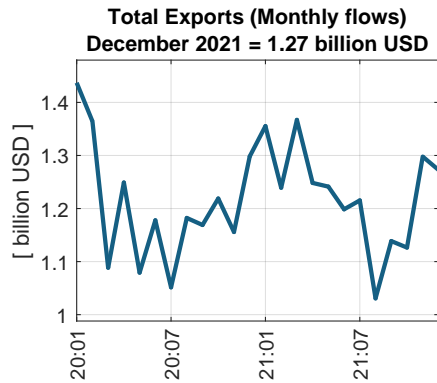
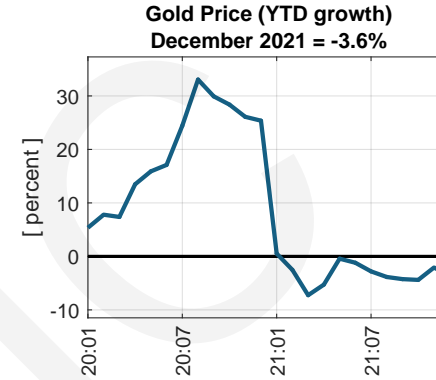
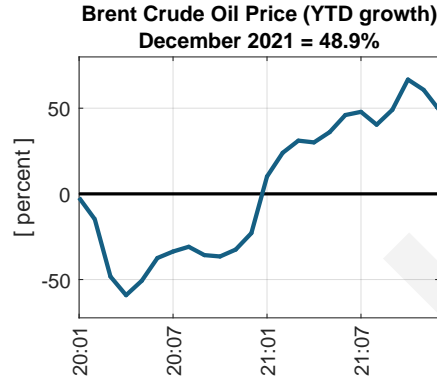
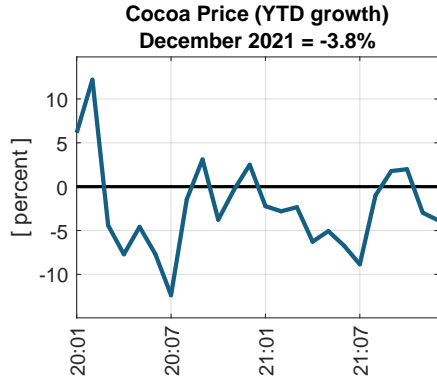
High Frequency Economic Indicators



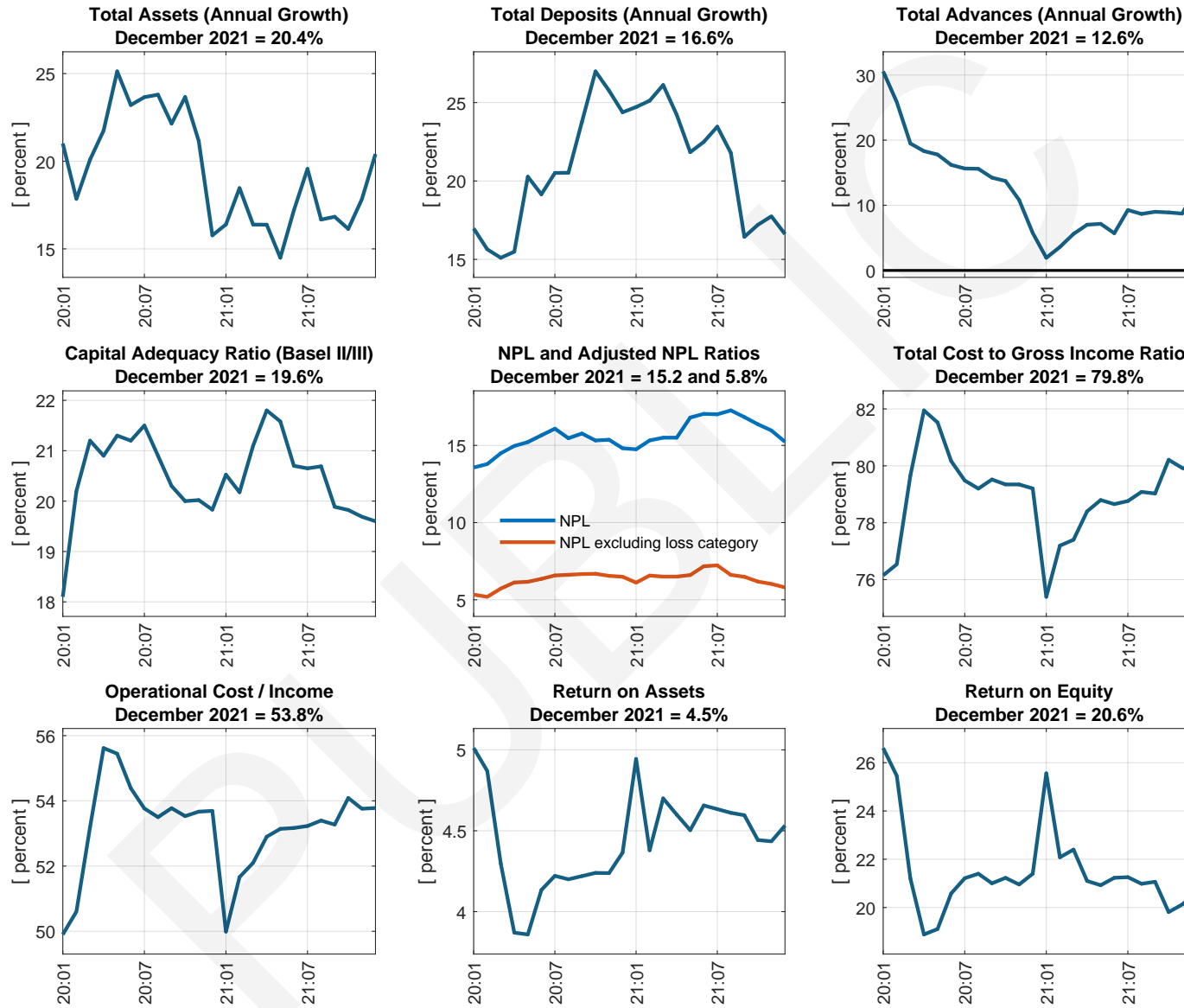
Monetary Developments



External Developments



Banking Sector Indicators



Mobile Money (MM)

